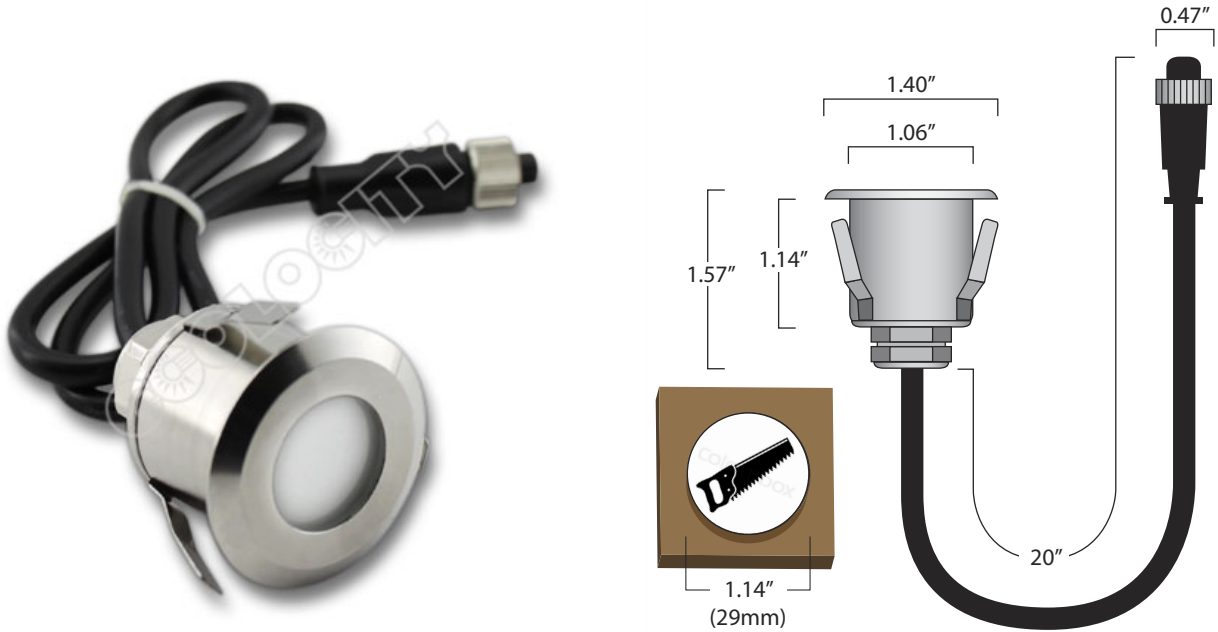


SPECIFICATIONS

1.40" RGB LED Recessed Light - 12VDC



PRODUCT NAME	1.40" RGB LED Recessed Light - 12VDC, IP68 Stainless Steel
SKU	OL-ON-RGB-D2
URL	Click Here

DESCRIPTION This 1.40" Round RGB LED Recessed Light is a durable and long lasting color changing LED Light that only consumes 0.4 watts of power. A stainless steel housing gives this LED an IP68 water-proof rating for outdoor and indoor use (non-submersible). The RGB LED Recessed light is perfect for stair case lighting, hand rails, toe kicks, under cabinets, over cabinets, in ground use, or any other lighting application requiring a small, low profile, and durable color controllable light. This fixture can be mounted in any circular hole with a 1.14" (29mm) Diameter. Using only 0.4W of power per light at 12VDC this product is a low energy, long lasting solution that will give any room or space an amazing color accent. Achieve over 16 million color shades with the right controller. The frosted cover and low profile when mounted makes for a sleek look when the lights are both on and off. Emits no UV or IR, CE approved. For use only with compatible 12VDC Constant Voltage power supplies and 12VDC common anode controllers.

SUPPLY VOLTAGE	12VDC Constant Voltage
OPERATING HOURS	40,000 Hours
BEAM ANGLE	120°
DIMENSIONS	1.40" Diameter X 1.57" Depth (35mm Diameter X 40mm Depth)
WATTS	0.4 Watts
IP RATING	IP68
WARRANTY	1 year manufacturers

These specification are subject to change without notice. This specification information is from the manufacturer of this product. Ecolocity LED is not the manufacturer of this product. Copyright © 2014 Ecolocity LED